







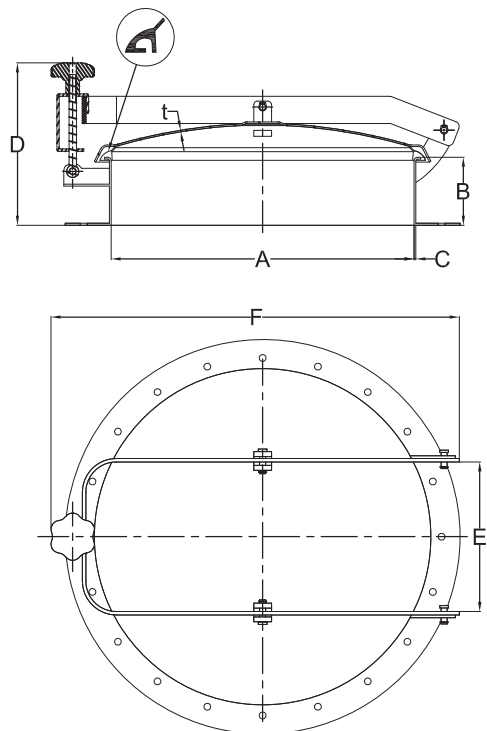
-  圆形常压人孔
-  Round manhole cover with back-side opening
-  Trappe Ronde avec ouverture par renversement
-  Runder Domdeckel, nach außen öffnend
-  Tapa circular con apertura vertical
-  Chiusino Circolare apertura a ribaltamento



- ◆ 7044 219
- ◆ 7044 300
- ◆ 7044 350
- ◆ 7044 400
- ◆ 7044 430
- ◆ 7044 450
- ◆ 7044 500
- ◆ 7044 600

规格尺寸 At temperature 50°C / 122 °F

CODE	A	OD×C	B	T	P.MAX
	mm	mm	mm	mm	bar
7044 219	214	219×3.0	100	2.0	0.3
7044 300	294	300×3.0	100	2.5	0.22
7044 350	344	350×3.0	100	2.5	0.18
7044 400	394	400×3.0	100	2.5	0.16
7044 430	424	430×3.0	100	2.5	0.15
7044 450	444	450×3.0	100	2.5	0.12
7044 500	494	500×3.0	100	2.5	0.1
7044 600	594	600×3.0	100	2.5	0



如果您需要了解此产品细节，请联系我们业务部。

*1BAR ≈ 14.5PSI ≈ 0.1MPa